



WinMedia



>> The 10/Series Numerical Control family keeps on growing



One of the reasons for the success of the 10/Series Numerical Control is continuous product evolution. We constantly strive to advance our technical know-how to maintain the high standard that our customers have come to expect from OSAI products. The 10/S CNC is an acknowledged Market Leader thanks to the efforts made towards power and flexibility.

In further pursuance of this goal, PRIMA ELECTRONICS is proud to present the new range of "WinMedia" Intelligent Operator Panels. In addition to the performance that is to be expected from a high specification Panel-PC, WinMedia marks a great visual, tactile and ergonomic innovation of the machine-operator interface concept.

Being equipped with pre-installed **MS-Windows™ XP Embedded** multi-language, the preferred language can be chosen from the 23 options available, without re-installing the operating system. In this environment **WinNBI**, the new OSAI operator interface suite, becomes the leading edge. By offering a standard interface for the CNC and all the development and set-up tools, WinNBI provides "user friendly" management of the CNC giving complete integration into the operator panel through simple but powerful multi-screen customization with Unicode support for non-European fonts. The same total ease-of-use approach has enabled us to reach new ambitious targets through the introduction of **NC-CAM Suite**, a Windows™-based suite, to be run on the WinMedia panel, dedicated to the interactive programming of multi-head, multi-spindle, drilling and routing centers for wood panels and glass sheets. The new product range, **powered at 24VDC**, is available in the **WinMedia Basic** and **WinMedia Value** versions, both based on the scalable ETX platform, equipped with "M" generation Intel® CPU's, with low heat generation that provides maximum reliability in a **fanless** structure. Both can be optionally equipped with **Touch Screen**. Access to the PCI expansion slot, the PC104 - PC104/Plus expansions and, for ease of maintenance, to the HDU and CPU, is now very much simplified.

PRIMA ELECTRONICS also offers an OSAI **Operator Console**, matched with the WinMedia design, that can be connected to the CNC through **OS-Wire** (OSAI digital bus) or through the standard **CANopen** interface. The combination of **WinMedia** and **Operator Console** brings an innovative image and homogeneity to the CNC



front end. The ability to customize the console buttons with industry standard parts (the I/O interface is integrated into the console) gives the flexibility to configure the complete operator interface for various types of application minimizing cabling.

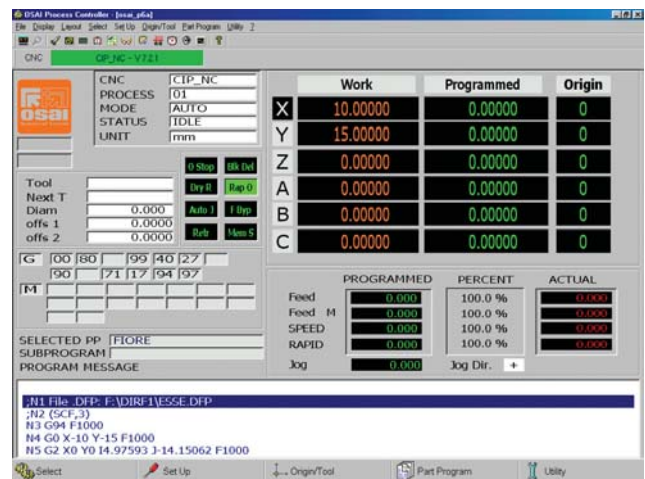


WinNBI



>> Using the WinMedia Panel combined with the **WinNBI** (Windows Network Based Interface), the OSAI's new Windows™ network based interface, it is possible to use a "user friendly" graphical interface, customizable through the mouse with "Point & Click" and "Drag & Drop" techniques without needing Windows™ programming knowledge.

WinNBI allows the creation of customizable process screens. Different screens can be built, starting with the insertion of basic objects like axes positions, Feed, Speed, G, M, T functions, progressing through to modifiable fonts and colours.



Each of these screens can be matched to one or more processes according to the requirements of the specific application. As WinNBI is based on COM/DCOM technology aimed at distributed architectures, it can interface with different CNCs located in different places of the factory.

| TECHNICAL CHARACTERISTICS WinMedia Panel | | | |
|--|--|--------------------------|--|
| Model | WinMedia Basic | WinMedia Value | WinMedia Compact |
| Processor | Intel® Celeron M 600 MHz | Intel® Celeron M 1.0 GHz | VIA Eden 733MHz |
| RAM Memory | SODDR RAM, 256Mb to 1Gb | | DDR -SDRAM, 256Mb |
| Hard Disk | 2,5" ≥40Gb | | |
| CD-ROM (option) | 1 CD-ROM drive | | - |
| Keyboard (external) | Siliconic rubber, 103 half stroke keys, integrated Touch Pad with buttons, PS/2 connection | | Siliconic rubber, 83 half stroke keys, PS/2 connection |
| Connections | 1 PS/2 for KBD/Mouse | | 1 PS/2 for KBD/Mouse, 25-pin Parallel Port |
| Ethernet | 10/100 Base-T, RJ45 | | |
| Serial Lines | 1 ports RS-232, 1 port RS-232/422/485 | | |
| USB | 2 USB 2.0 on the back, 1 on the front | | 2 USB 2.0 (1 if touch screen option is present) |
| Expansions | 1 PCI slot, 1 PC/104 - PC/104 PLUS | | - |
| Power supply | 24Vdc +-10%, 1.5A | | |
| Display | 15" XGA TFT-LCD 331.3mm (H) x 257.9mm (V) | | 12,1" SVGA TFT-LCD 310mm (H) x 241mm (V) |
| Resolution | 1024 (RGB x 3) x 768 XGA | | 800 (RGBx3) x 600 SVGA |
| Display angles (tye) | UP 65°, DOWN 55°, R&L 70° | | |
| Touch screen (option) | USB interface, resistive type | | |